

# 2026 NETWORK AUTONEST

**CONTACT US**



877-549-8211



[cim-tech.com](http://cim-tech.com)

## Installation Guide

***CIM-TECH***   
AUTOMATED CAD/CAM SOLUTIONS

# **Network Nest Installation Guide**

**© 2025 CIM-TECH.COM, Inc.**

All rights reserved. No parts of this work may be reproduced in any form or by any means - graphic, electronic, or mechanical, including photocopying, recording, taping, or information storage and retrieval systems - without the written permission of the publisher.

Products that are referred to in this document may be either trademarks and/or registered trademarks of the respective owners. The publisher and the author make no claim to these trademarks.

While every precaution has been taken in the preparation of this document, the publisher and the author assume no responsibility for errors or omissions, or for damages resulting from the use of information contained in this document or from the use of programs and source code that may accompany it. In no event shall the publisher and the author be liable for any loss of profit or any other commercial damage caused or alleged to have been caused directly or indirectly by this document.

Published: September 2025

**CIM-TECH.COM, Inc.  
7512 Dr. Phillips Blvd.  
Suite 50-859  
Orlando, FL 32819  
United States  
[www.cim-tech.com](http://www.cim-tech.com)**

**Toll-Free Technical Support:  
(877) 549-8211**

# Table of Contents

<b>Network AutoNEST Key Installation</b>	<b>4</b>
1 Installation Guide Server .....	5
2 Installation Guide Client .....	11
3 Installation Guide Server Upgrade .....	14
4 Installation Guide Client Upgrade .....	21

## Network AutoNEST Key Installation Quick Start:

### Network Hardware Locks

It is important to note that the Network AutoNest key requires a USB hardware lock in order to operate.

**Note: Type 1 Hypervisor Appliance Compatibility Warning:** Please be aware that neither Router-CIM, Solid-CIM or Radan's Autonest USB hardware locks are compatible with any Type 1 Hypervisor appliance, including, but not limited to, Microsoft Hyper-V, Oracle VM, KVM and Citrix Hypervisor. These products ARE compatible with Type 2 Hypervisor appliances, such as VMWare's VM Workstation.

Proceed to the following sections for specific installation based on Server, Client, Server Upgrade, Client Upgrade:

[Installation Guide Server](#)

[Installation Guide Client](#)

[Installation Guide Server Upgrade](#)

[Installation Guide Client Upgrade](#)

### Notes:

- The locks communicate on port 1947. If you use a firewall, ensure that it does not block this port.
- A client may also act as the lock server
- You will need to repeat the Client Setup steps on any new Router-CIM installs.
- If you ever move the AutoNEST Network USB lock you would need to repeat the server setup on that system and then repeat step 2 of the client setup to point them to the new server.

## Installation Guide - Server

Local users will need Administrator privileges to install the software.

**Note: Type 1 Hypervisor Appliance Compatibility Warning:** Please be aware that neither Router-CIM, Solid-CIM or Radan's Autonest USB hardware locks are compatible with any Type 1 Hypervisor appliance, including, but not limited to, Microsoft Hyper-V, Oracle VM, KVM and Citrix Hypervisor. These products ARE compatible with Type 2 Hypervisor appliances, such as VMWare's VM Workstation.

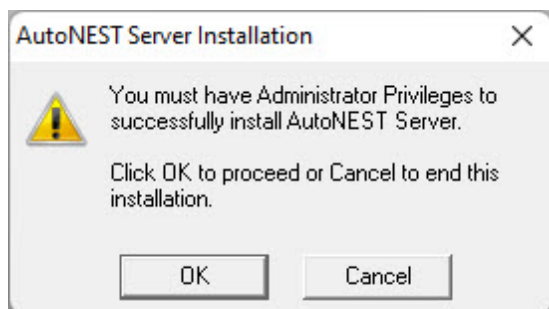
The Network AutoNEST Key for the Server is installed in the following manner:

Download the server setup using the following link and install it on your server.

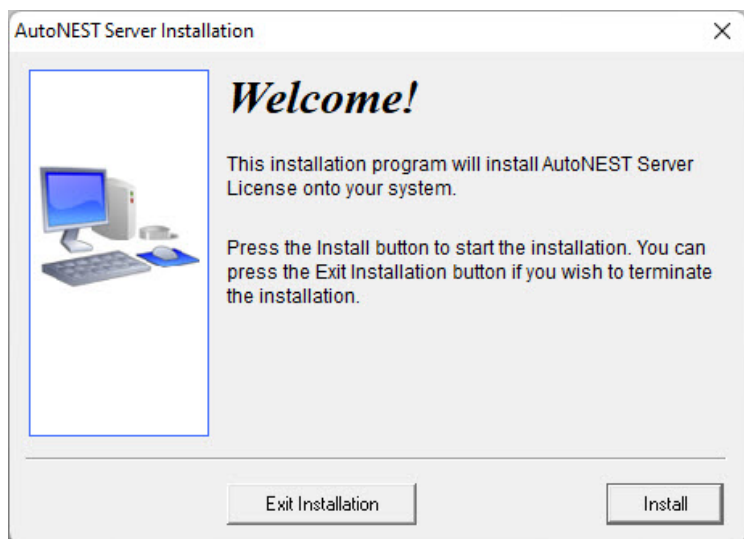
**Note:** a client may also act as the lock server. If the USB hardware lock is plugged into a client computer, you will still install the Server setup file and once complete, you will need to then run the Client install as well.

[http://www.cimtechsoftware.com/Autonest%20Network/HL\\_NET/ServerSetup\\_v9.19/AutoNEST\\_SetupServer.exe](http://www.cimtechsoftware.com/Autonest%20Network/HL_NET/ServerSetup_v9.19/AutoNEST_SetupServer.exe)

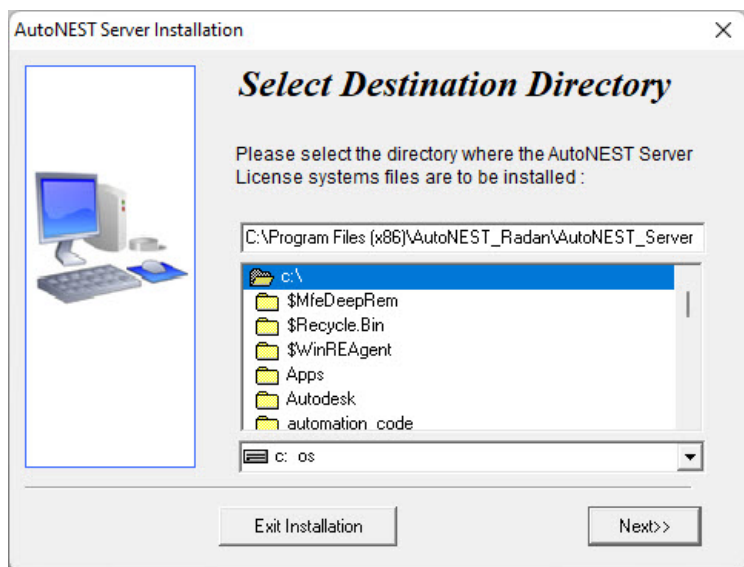
When the server installation program starts, the following screen will appear:



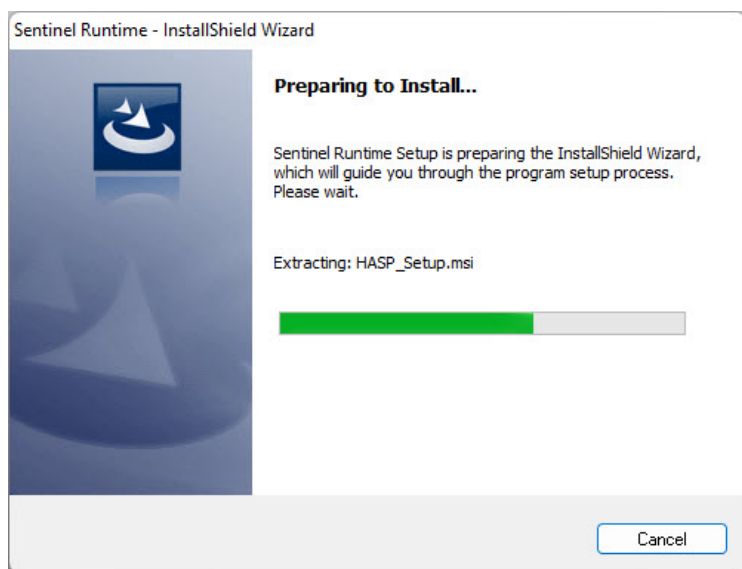
Select '**OK**' to continue if you have Administrator Privileges.



Select '**Install**' to continue.

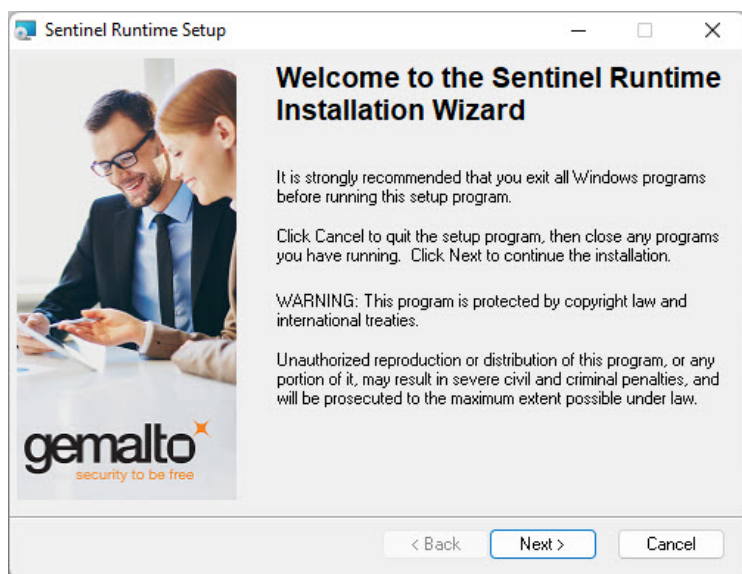


Select '**Next**' to continue.

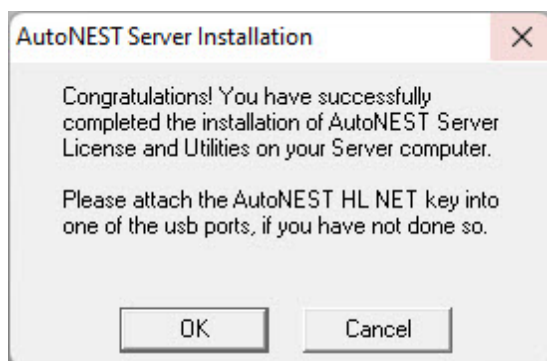


This screen will complete automatically.





Select '**Next**' to continue.



Select '**OK**' to complete the installation on the Server.

**Attach the Network AutoNest USB hardware lock to that server.**

## Installation Guide - Client

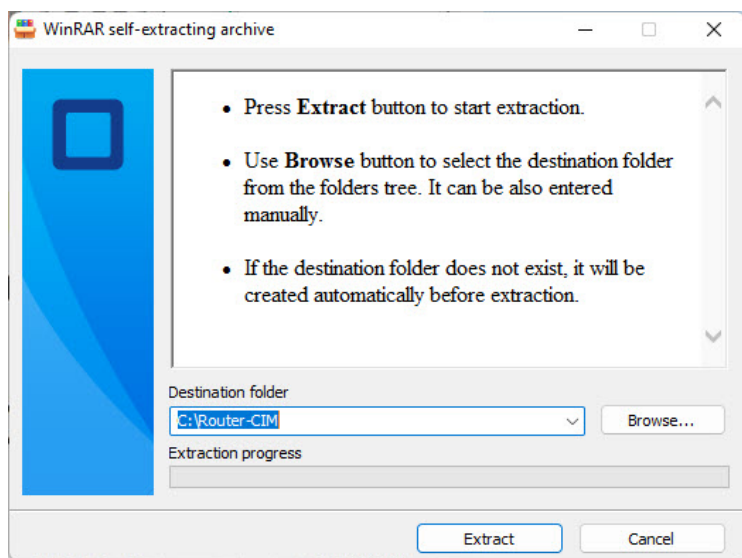
**Local users will need Administrator privileges to install the software.**

The Network AutoNEST Key for the Client is installed in the following manner:

Download the client setup using the following link and install it on your client.

[http://www.cimtechsoftware.com/Autonest%20Network/HL\\_NET/ANEST9.19\(L\)-NET.exe](http://www.cimtechsoftware.com/Autonest%20Network/HL_NET/ANEST9.19(L)-NET.exe)

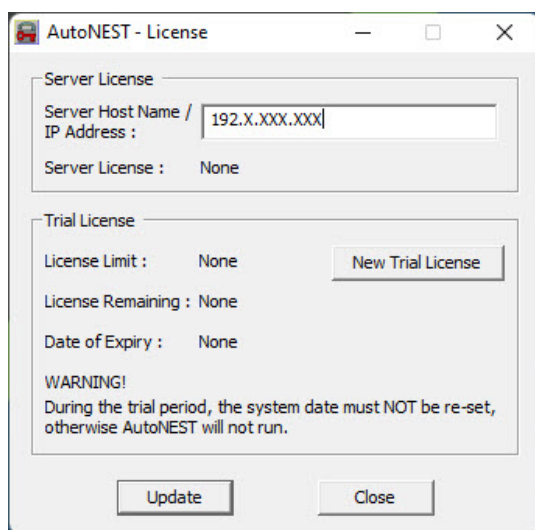
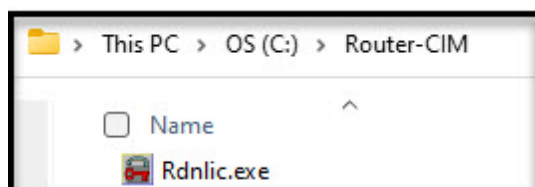
When the client installation program starts, the following screen will appear:



Select '**Extract**' and then proceed.

**NOTE:** The destination folder must stay as C:\Router-CIM.

Go to C:\Router-CIM folder and run the file Rdnlic.exe.



Enter the Hostname or IP of the system that has the Network USB hardware lock installed in the Server Host Name field and click Update.

If the License field updates to show your current number of licenses the client setup is complete.

Repeat this process on additional client computers if additional licenses are available.

## Installation Guide - Server Upgrade

Local users will need Administrator privileges to install the software.

**Note: Type 1 Hypervisor Appliance Compatibility Warning:** Please be aware that neither Router-CIM, Solid-CIM or Radan's Autonest USB hardware locks are compatible with any Type 1 Hypervisor appliance, including, but not limited to, Microsoft Hyper-V, Oracle VM, KVM and Citrix Hypervisor. These products ARE compatible with Type 2 Hypervisor appliances, such as VMWare's VM Workstation.

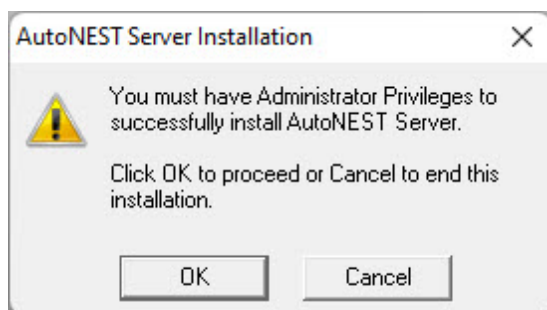
Uninstall the previous version first.

Download the server setup using the following link and install it on your server.

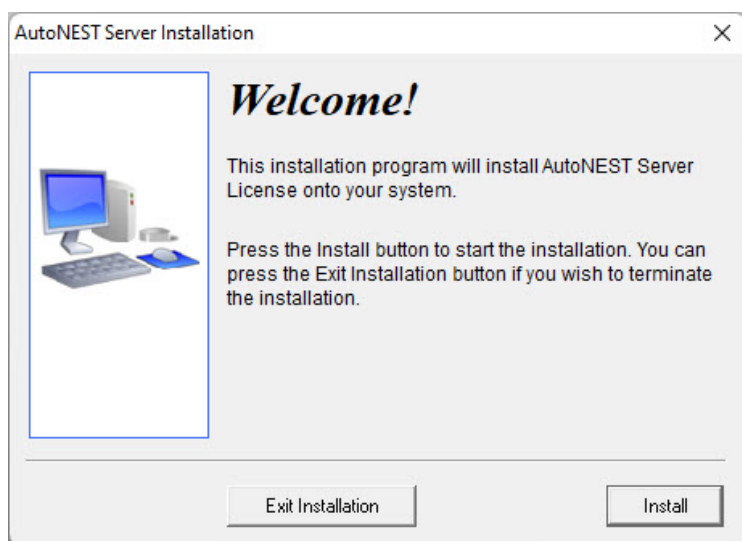
**Note:** a client may also act as the lock server. If the USB hardware lock is plugged into a client computer, you will still install the Server setup file and once complete, you will need to then run the Client install as well.

[http://www.cimtechsoftware.com/Autonest%20Network/HL\\_NET/ServerSetup\\_v9.19/AutoNEST\\_SetupServer.exe](http://www.cimtechsoftware.com/Autonest%20Network/HL_NET/ServerSetup_v9.19/AutoNEST_SetupServer.exe)

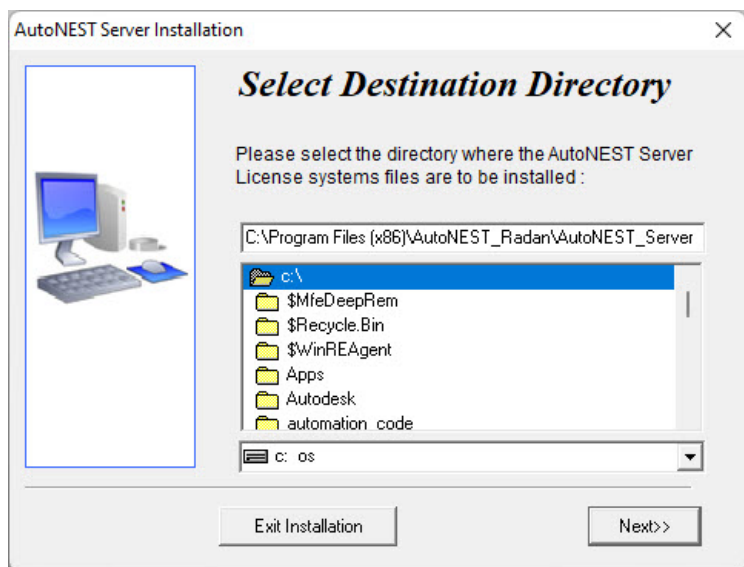
When the server upgrade installation program starts, the following screen will appear:



Select '**OK**' to continue if you have Administrator Privileges.

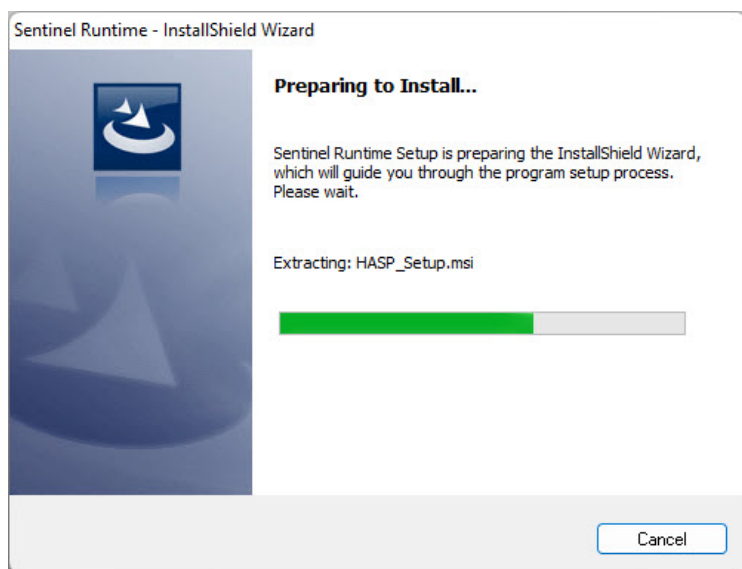


Select '**Install**' to continue.

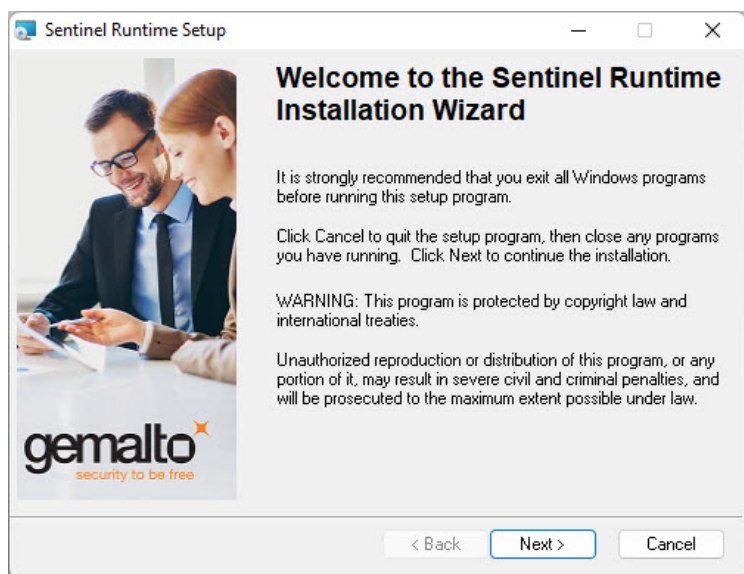


Select '**Next**' to continue.

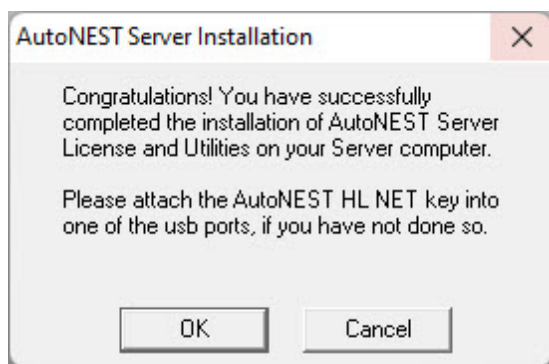




This screen will complete automatically.



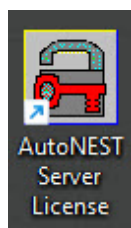
Select '**Next**' to continue.



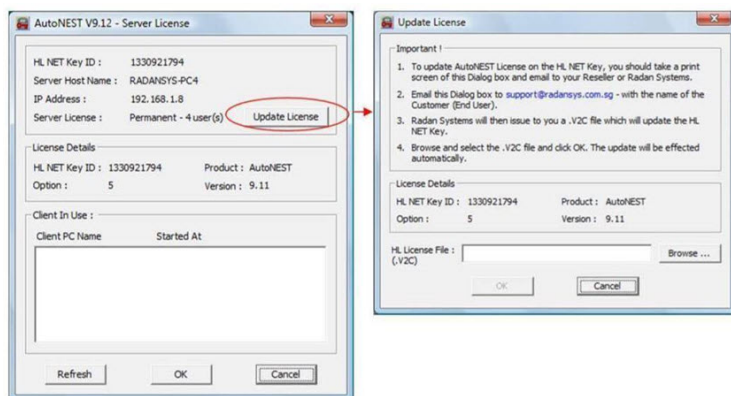
Select '**OK**' to complete the installation on the Server.

**Attach the Network AutoNest USB hardware lock to that server.**

Next, run the AutoNest Server License shortcut located on the Desktop:



Click Update License and then Browse to the .V2C located on the DVD to update the license by selecting 'OK'.



## Installation Guide - Client Upgrade

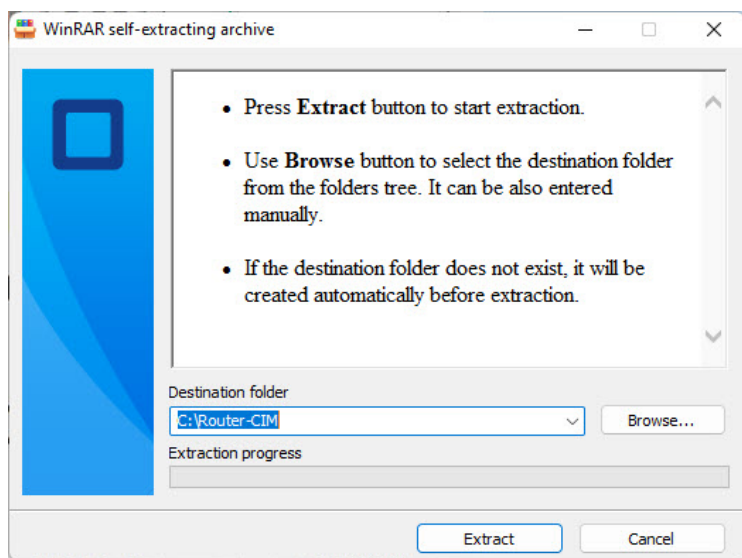
**Local users will need Administrator privileges to install the software.**

The Network AutoNEST Key for the Client is installed in the following manner:

Download the client setup using the following link and install it on your client.

[http://www.cimtechsoftware.com/Autonest%20Network/HL\\_NET/ANEST9.19\(L\)-NET.exe](http://www.cimtechsoftware.com/Autonest%20Network/HL_NET/ANEST9.19(L)-NET.exe)

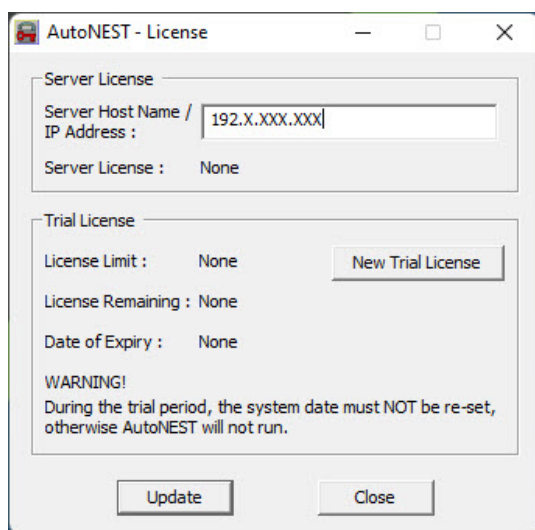
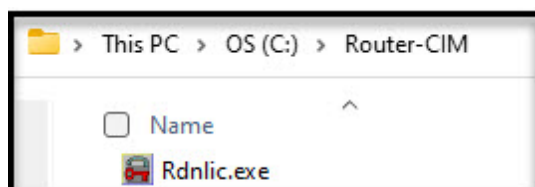
When the client installation program starts, the following screen will appear:



Select '**Extract**' and then proceed.

**NOTE:** The destination folder must stay as C:\Router-CIM.

Go to C:\Router-CIM folder and run the file Rdnlic.exe.



Enter the Hostname or IP of the system that has the Network USB hardware lock installed in the Server Host Name field and click Update.

If the License field updates to show your current number of licenses the client setup is complete.

Repeat this process on additional client computers if additional licenses are available.



**CIM-TECH.COM, Inc.  
7512 Dr. Phillips Blvd.  
Suite 50-859  
Orlando, FL 32819  
United States  
[www.cim-tech.com](http://www.cim-tech.com)**

**Toll-Free Technical Support:  
(877) 549-8211**