

2026 MULTI-CIM

CNC SOFTWARE SOLUTIONS BY CIM-TECH

CONTACT US



877-549-8211



cim-tech.com

Installation Guide

CIM-TECH 
AUTOMATED CAD/CAM SOLUTIONS

© 2025 CIM-Tech.com, Inc.



*We are pleased to
announce the release of
Multi-CIM.*

by CIM-Tech.com, Inc.

Multi-CIM Users Guide

© 2025 CIM-Tech.com, Inc.

All rights reserved. No parts of this work may be reproduced in any form or by any means - graphic, electronic, or mechanical, including photocopying, recording, taping, or information storage and retrieval systems - without the written permission of the publisher.

Products that are referred to in this document may be either trademarks and/or registered trademarks of the respective owners. The publisher and the author make no claim to these trademarks.

While every precaution has been taken in the preparation of this document, the publisher and the author assume no responsibility for errors or omissions, or for damages resulting from the use of information contained in this document or from the use of programs and source code that may accompany it. In no event shall the publisher and the author be liable for any loss of profit or any other commercial damage caused or alleged to have been caused directly or indirectly by this document.

Printed: September 2025

*CIM-TECH.COM, Inc.
7512 Dr. Phillips Blvd.
Suite 50-859
Orlando, FL 32819*

*Toll-Free Technical Support:
(800) 549-8211*

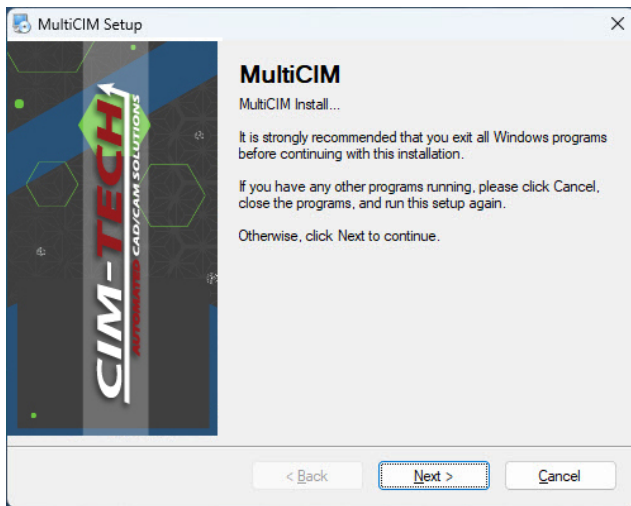
Table of Contents

Part I Installing the Program	5
--	----------

1 Installing the Program

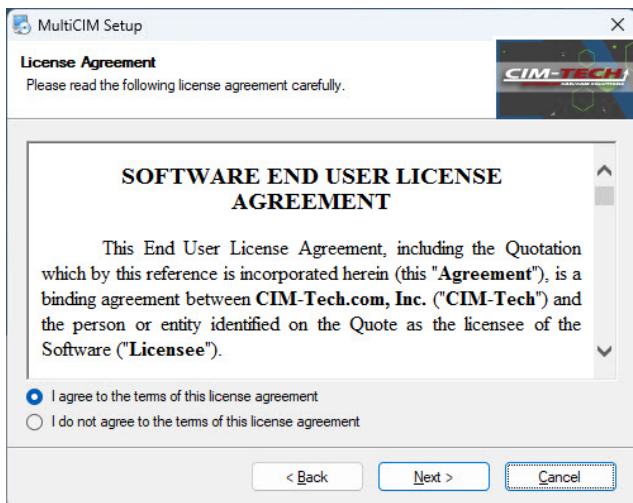
Installation and Configuration

Download the Multi-CIM installation files according to the included download card with your Multi-CIM software package or visit www.cim-tech.com/26MCIM. The website will include the instructions for starting the installation.



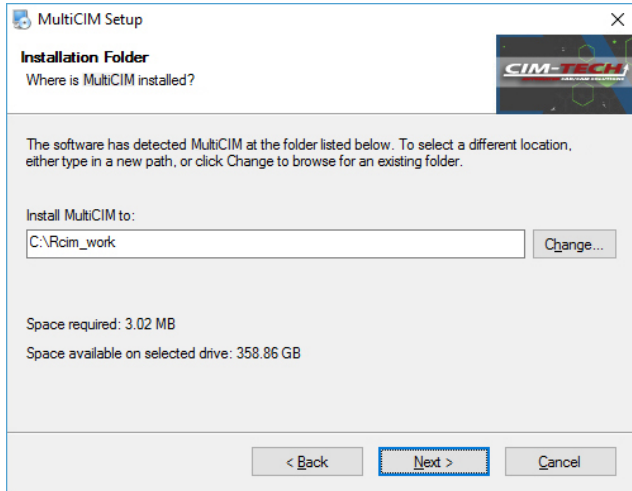
From here, all of the default selections have been made for you. We recommend that you leave the defaults, as it will be simpler for you later if technical support is needed and you need to know the locations of the Multi-CIM files.

Select **'Next'** to continue.



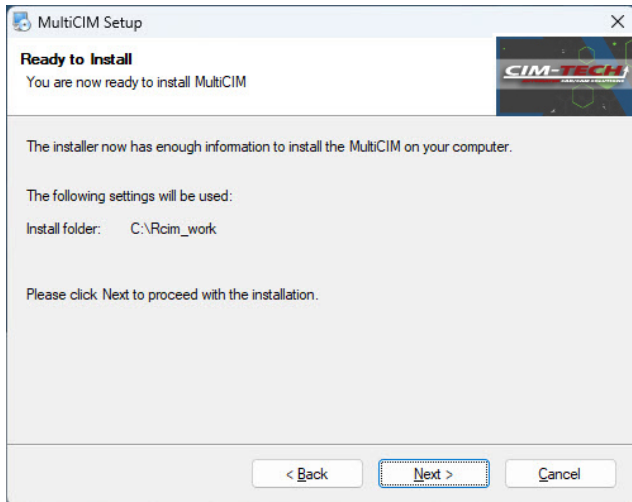
This is the license agreement for Multi-CIM. Be sure you read the agreement. Selecting '**I do not agree to the terms of this license agreement**' will allow you to exit the program without installing Multi-CIM to your computer. Selecting '**Back**' will return you to the previous window.

Select '**I agree to the terms of this license agreement**' and '**Next**' to continue.



It is recommended to leave the default location.

Select '**Next**' to continue.



This screen will recap where Multi-CIM is going to be installed to.

Select '**Next**' to continue.



Once the install is completed, and you click on '**Finish**', all the files will be in the correct locations.

The sample drawing, lisp program, and necessary Router-CIM changes are copied to your drive along with the macro.

In the Install:

There is a sample drawing named MultiCIM_Sample.dwg. This dwg file is in the C:\Rcim_work folder.

There is also the developed program, named **MCIM.fas** copied into the C:\rcim_work folder.



CIM-TECH.COM, Inc.
7512 Dr. Phillips Blvd.
Suite 50-859
Orlando, FL 32819

Toll-Free Technical Support:
(800) 549-8211