

2026 CAM COMPANION

CONTACT US



877-549-8211



cim-tech.com

Installation Guide



AUTODESK

CIM-TECH 
AUTOMATED CAD/CAM SOLUTIONS

© 2025 CIM-TECH.COM, Inc

AutoCAD CAM Companion Installation Guide

© 2025 CIM-TECH.COM, Inc

All rights reserved. No parts of this work may be reproduced in any form or by any means - graphic, electronic, or mechanical, including photocopying, recording, taping, or information storage and retrieval systems - without the written permission of the publisher.

Products that are referred to in this document may be either trademarks and/or registered trademarks of the respective owners. The publisher and the author make no claim to these trademarks.

While every precaution has been taken in the preparation of this document, the publisher and the author assume no responsibility for errors or omissions, or for damages resulting from the use of information contained in this document or from the use of programs and source code that may accompany it. In no event shall the publisher and the author be liable for any loss of profit or any other commercial damage caused or alleged to have been caused directly or indirectly by this document.

Published: November 2025

**CIM-TECH.COM, Inc.
7512 Dr. Phillips Blvd.
Suite 50-859
Orlando, FL 32819
United States
www.cim-tech.com**

**Toll-Free Technical Support:
(877) 549-8211**

Table of Contents

System Requirements and Installation	4
1 Installation Quick Start	6
2 Installation	7
3 Activation	15

AutoCAD CAM Companion 2026 Minimum System Requirements

For 64-bit Systems

- Microsoft® Windows® 11 (64-bit) or Microsoft® Windows® 10 (64-bit) version 1809 or above.
- 2.5-2.9 gigahertz (GHz) or greater (Recommended: 3.0+ GHz or greater, 8 or more cores). ARM Processors are not supported.
- 8GB of RAM (32GB or more for 3D Modeling)
- 10GB or more Free disk space for Installation (40GB or more for 3D Modeling). SSD suggested.
- 1920 x 1080 True Color video display adapter 128 MB or greater, Pixel Shader 3.0 or greater, with "Recommended" graphics card (3840 x 2160 (4K) with preferred scaling: 100%, 125% or 150% on Windows®, 64-bit systems with capable display card).
- Microsoft® Internet Explorer 11.0 (or equivalent) or later web browser with network connection
- 2 GB GPU with 29 GB/s Bandwidth and DirectX 11 compliant (Recommended: 8GB GPU with 106 GB/S Bandwidth and DirectX 12 compliant)
- .NET Framework Version 8 or later
- 1 Available USB port

Hardware Locks

In addition to the hardware requirements listed above, it is important to note that AutoCAD CAM Companion requires the Router-CIM hardware lock (often called 'dongles') in order to function. These can be either a USB type or a Parallel Port (printer port) type.

Note on Hardware Locks:

The Router-CIM 2007-2026 Hardware Locks are different than the 2004, 2005, and 2006 Hardware Locks. If you are upgrading from a version prior to 2007, you will receive a new Hardware Lock with the software and will have to return the old Hardware Lock through a traceable carrier. Lost locks are the customer's responsibility so insure your shipment for full software value. If you fail to return the old lock, you will be invoiced for the full purchase price of the software. If you have Router-CIM 2007 or newer, the Hardware Locks are compatible and no switch is necessary.

Note: Type 1 Hypervisor Appliance Compatibility Warning: Please be aware that neither Router-CIM, Solid-CIM or Radan's Autonest USB hardware locks are compatible with any Type 1 Hypervisor appliance, including, but not limited to, Microsoft Hyper-V, Oracle VM, KVM and Citrix Hypervisor. These products ARE compatible with Type 2 Hypervisor appliances, such as VMWare's VM Workstation.

Installation Quick Start

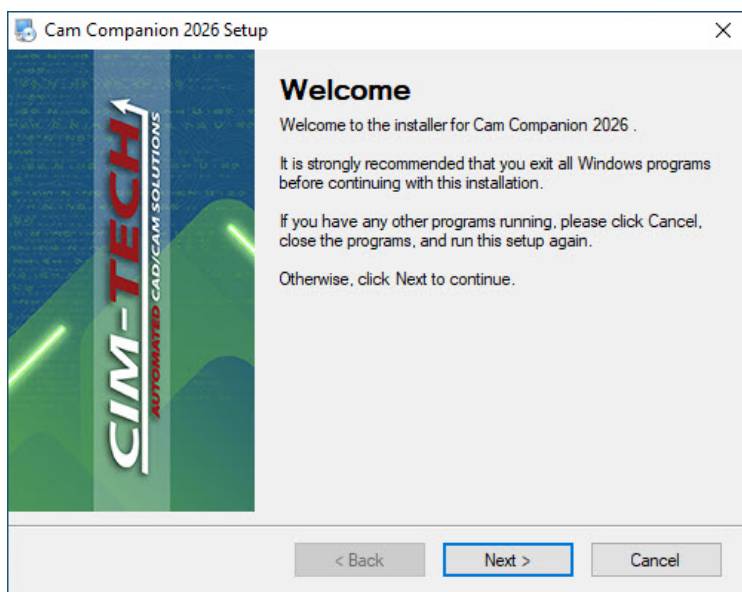
The AutoCAD CAM Companion program is installed in the following manner.

- Unplug any USB hardware locks previously installed.
- Download the AutoCAD CAM Companion installation files according to the included download card with your Router-CIM software package or visit www.cim-tech.com/26CC. The website will include the instructions for downloading the necessary files including the file for starting the installation.
- The AutoCAD CAM Companion serial number will determine the installation options. The serial number is located on AutoCAD CAM Companion download card included with your Router-CIM software package.
- Follow the installation guide for proper installation.
- The install will place the AutoCAD CAM Companion files in the default locations.
- Once the AutoCAD CAM Companion install is finished, then you can proceed to install Router-CIM Automation Suite.

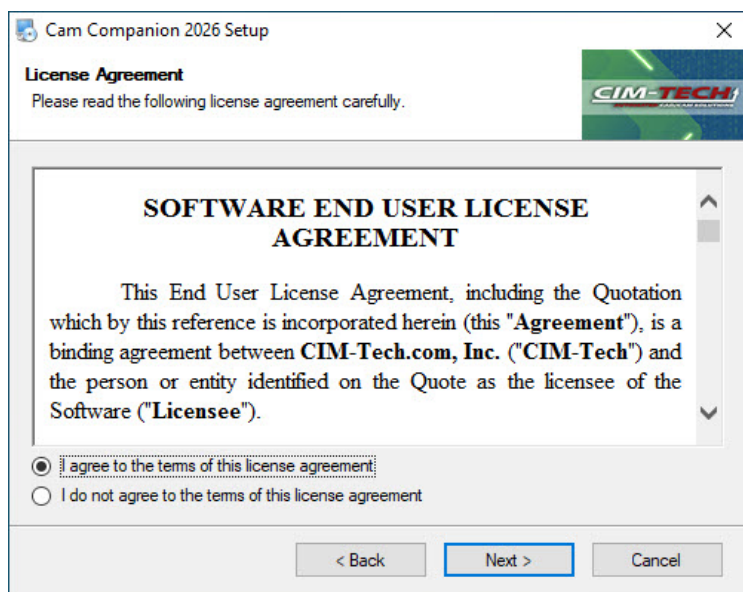
Installation Guide

Download the AutoCAD CAM Companion installation files according to the included download card with your Router-CIM software package or visit www.cim-tech.com/26CC. The website will include the instructions for downloading the necessary files including the file for starting the installation.

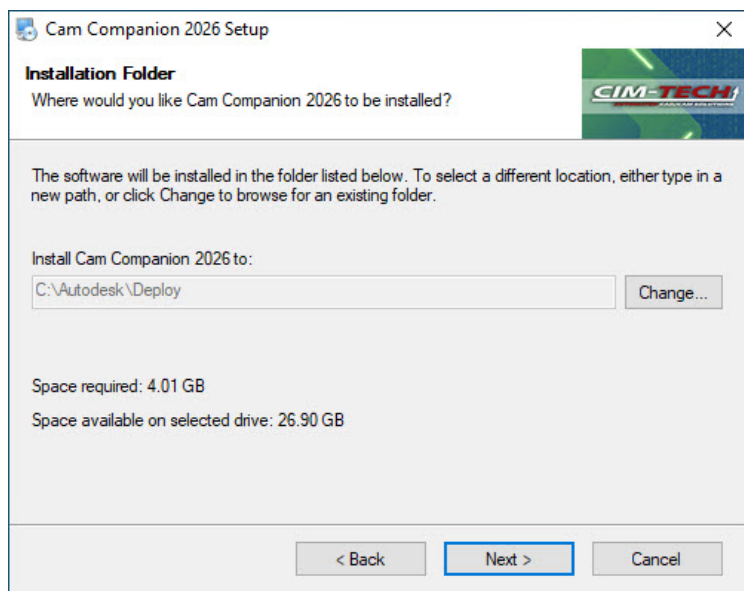
Select '**Next**' on the Welcome screen to begin the installation.



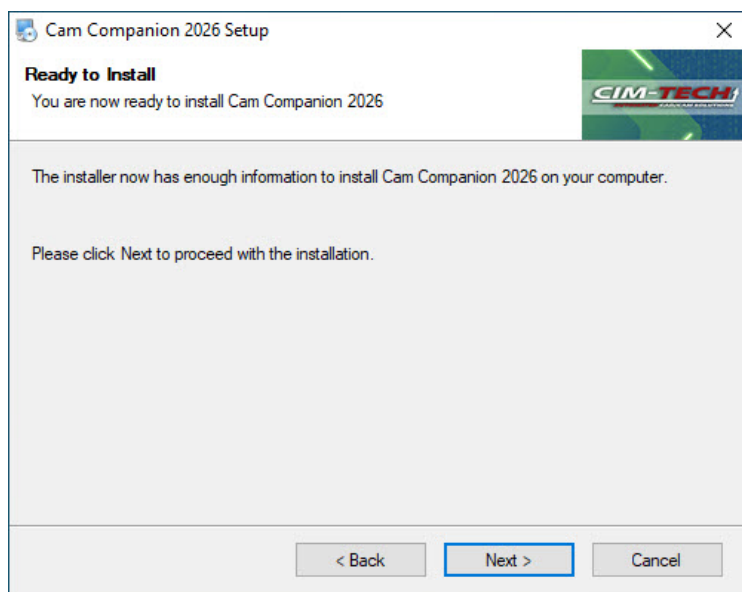
From this screen you can read the Legal Agreement and then select the ***'I agree to the terms of this license agreement'*** button and then ***'Next'***:



This screen will show you the default installation folder and will verify the disk space available for the installation.



You may select '**Next**' to continue, '**Back**' to go to the previous window, or '**Cancel**' to exit from the installation.

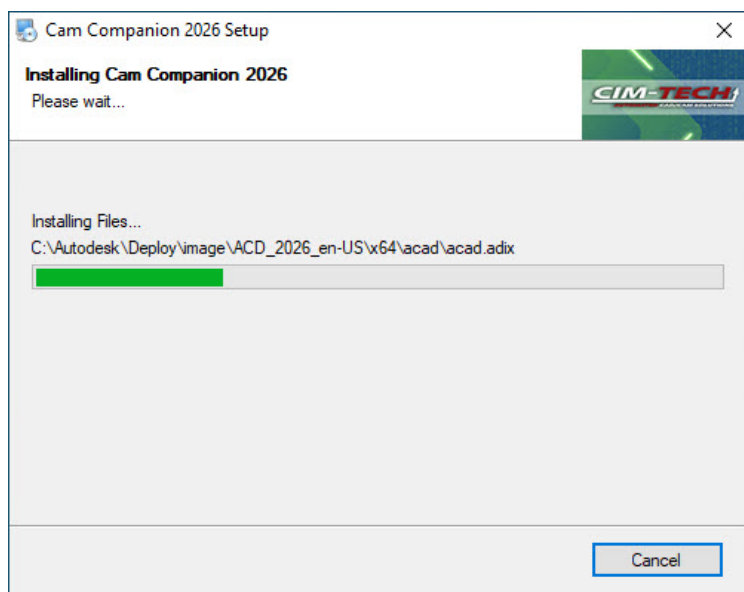


This screen will recap the AutoCAD CAM Companion installation.

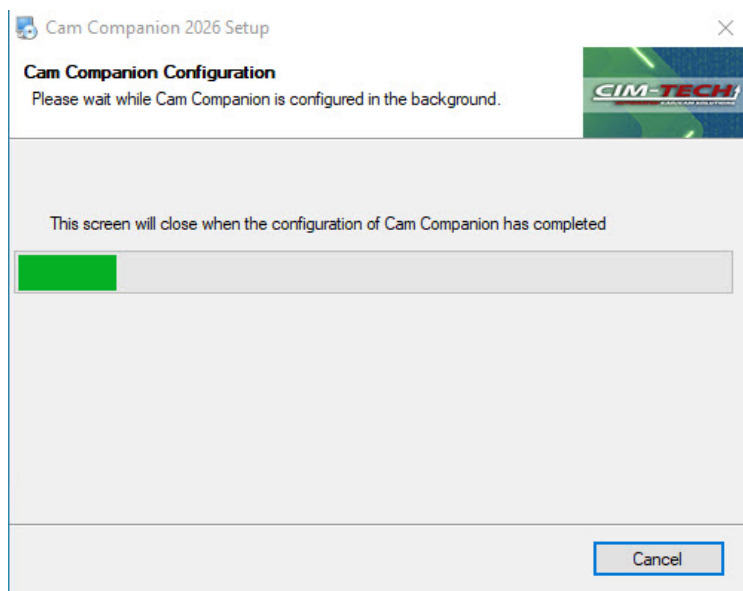
You may select '**Next**' to continue, '**Back**' to go to the previous window, or '**Cancel**' to exit from the installation.

The Installation will start and various components will install.

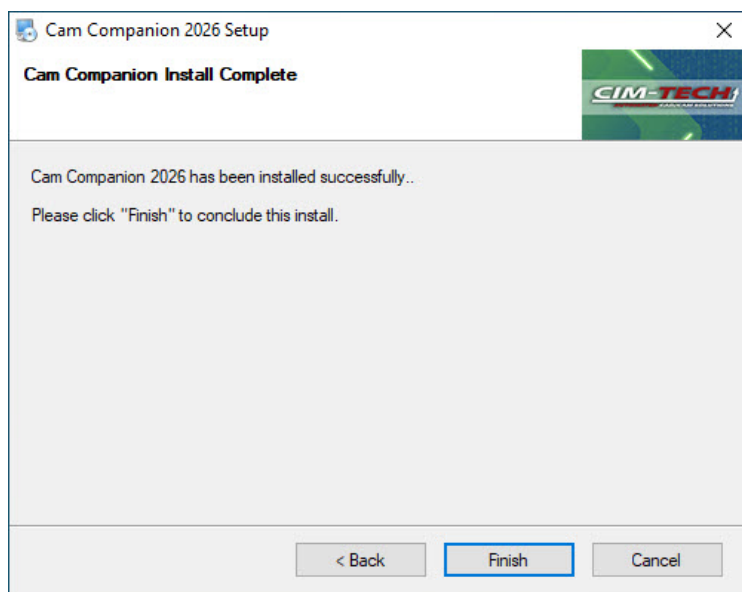
The progress appears on the screen.



When it is finished installing, CIM-Tech will configure and authorize AutoCAD CAM Companion:



When AutoCAD CAM Companion has finished installing, you should see this screen:



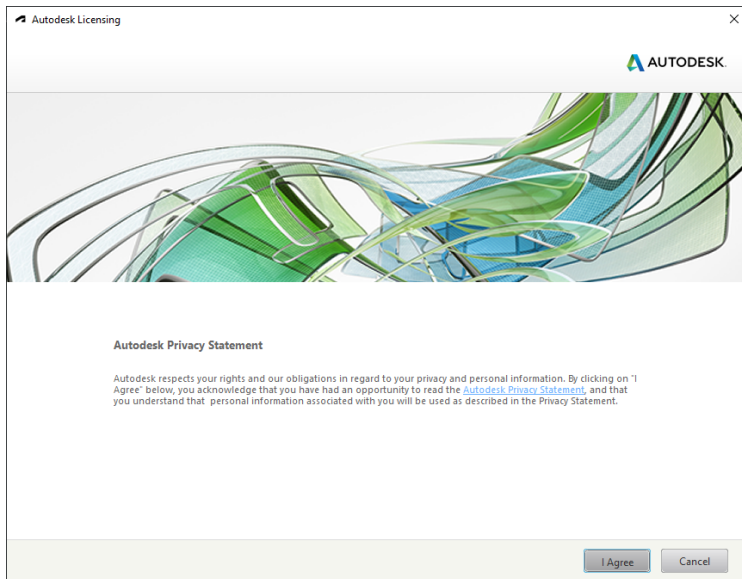
Note: If you open CAM Companion prior to installing Router-CIM Automation Suite, you will be prompted with this message. Install Router-CIM Automation Suite in order to utilize CAM Companion.



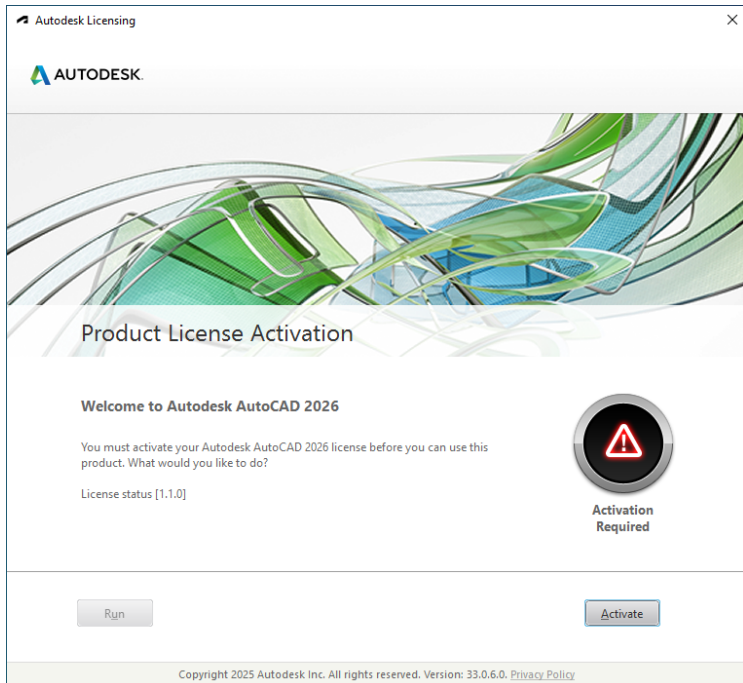
Activation Guide

Now that AutoCAD CAM Companion is installed, you can launch AutoCAD CAM Companion to complete the license activation steps for AutoCAD CAM Companion once the Router-CIM installation has been completed.

From this screen you can read Autodesk's Privacy Statement via the hyperlink, and select the **'I agree'** button to continue.



Then, click the **'Activate'** button to continue with activating AutoCAD CAM Companion.



Next, enter the AutoCAD CAM Companion serial number and click the 'Next' button. The serial number is located on AutoCAD CAM Companion download card included with your Router-CIM software package.

Note: A network connection is required to activate the AutoCAD CAM Companion license. Each serial number that you receive will allow up to two (2) activations, office and travel computer. If you need assistance, you will need to contact support@cim-tech.com.

Autodesk Licensing - Activating

AUTODESK.

Product Registration & Activation

Thank you for purchasing an Autodesk product.

The next pages will guide you through registration and activation of your product.

If you need help with a field, click the help icon

Enter Product Serial Number.

The serial number field must contain the serial number in numerical digit format (i.e. 1,2,3)

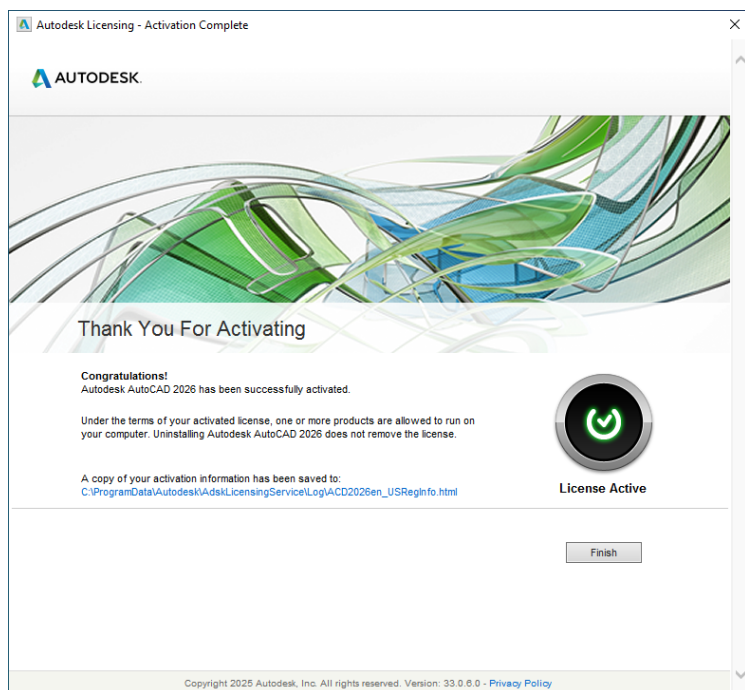
xxx-xxxxxxx

Close Next >>

Questions? Ask our Virtual Agent

© Copyright 2025 Autodesk, Inc. All rights reserved. [Legal Notices & Trademark](#) - [Privacy Policy](#)

Upon successful activation, you should see the Activation Complete screen below. Click finish to dismiss the activation window.



Now the **AutoCAD CAM Companion** is fully installed and activated.



**CIM-TECH.COM, Inc.
7512 Dr. Phillips Blvd.
Suite 50-859
Orlando, FL 32819
United States
www.cim-tech.com**

**Toll-Free Technical Support:
(877) 549-8211**